

# UPPER LEVEL ELECTRICAL

Scale: 1/8" = 1'-0"

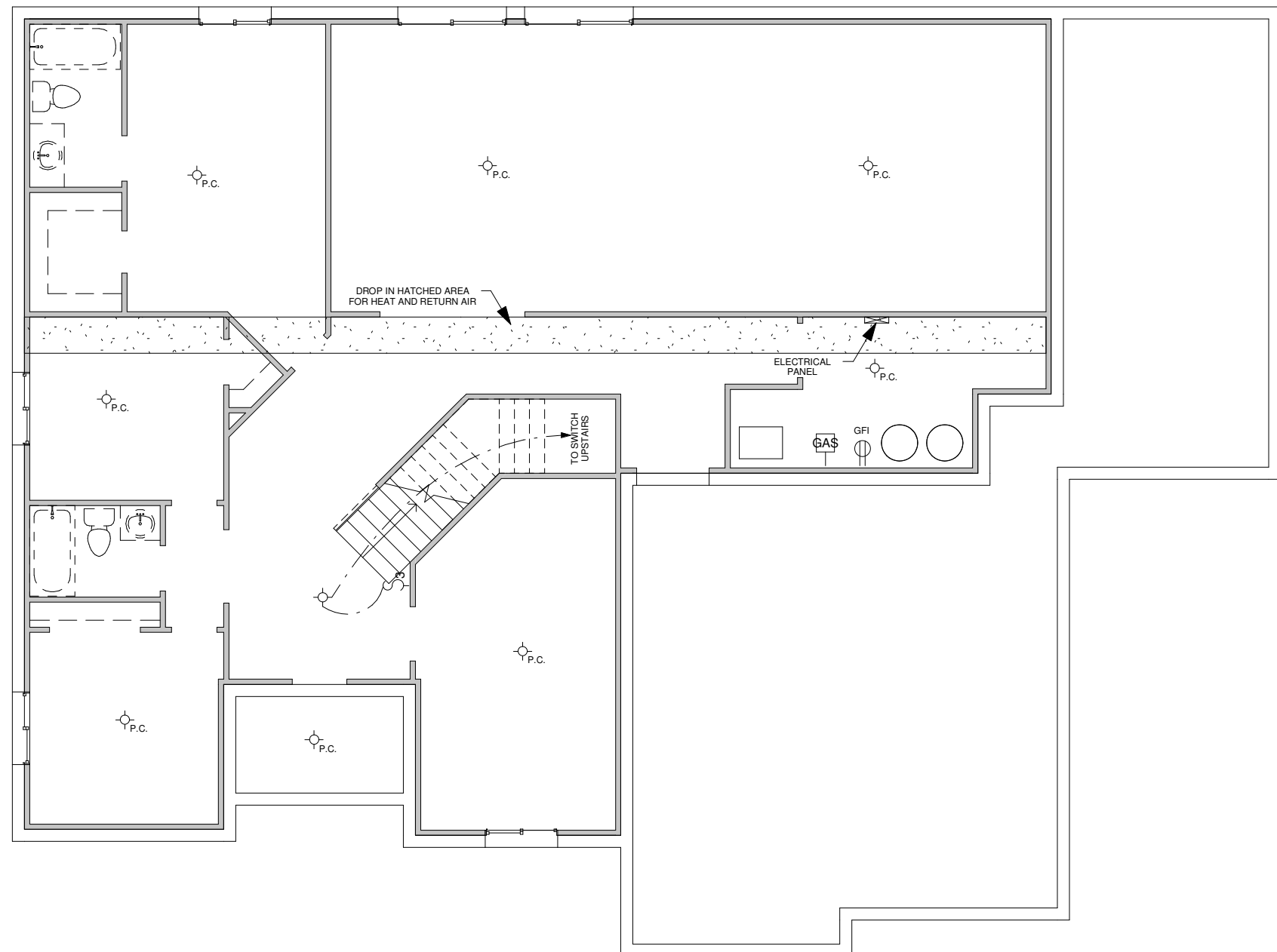


**Walker Home Design**

4586 S. BOWERS VISTA CIR. (625 E.)  
SALT LAKE CITY, UT 84107  
(801)263-2787 office (801)699-7262 cell

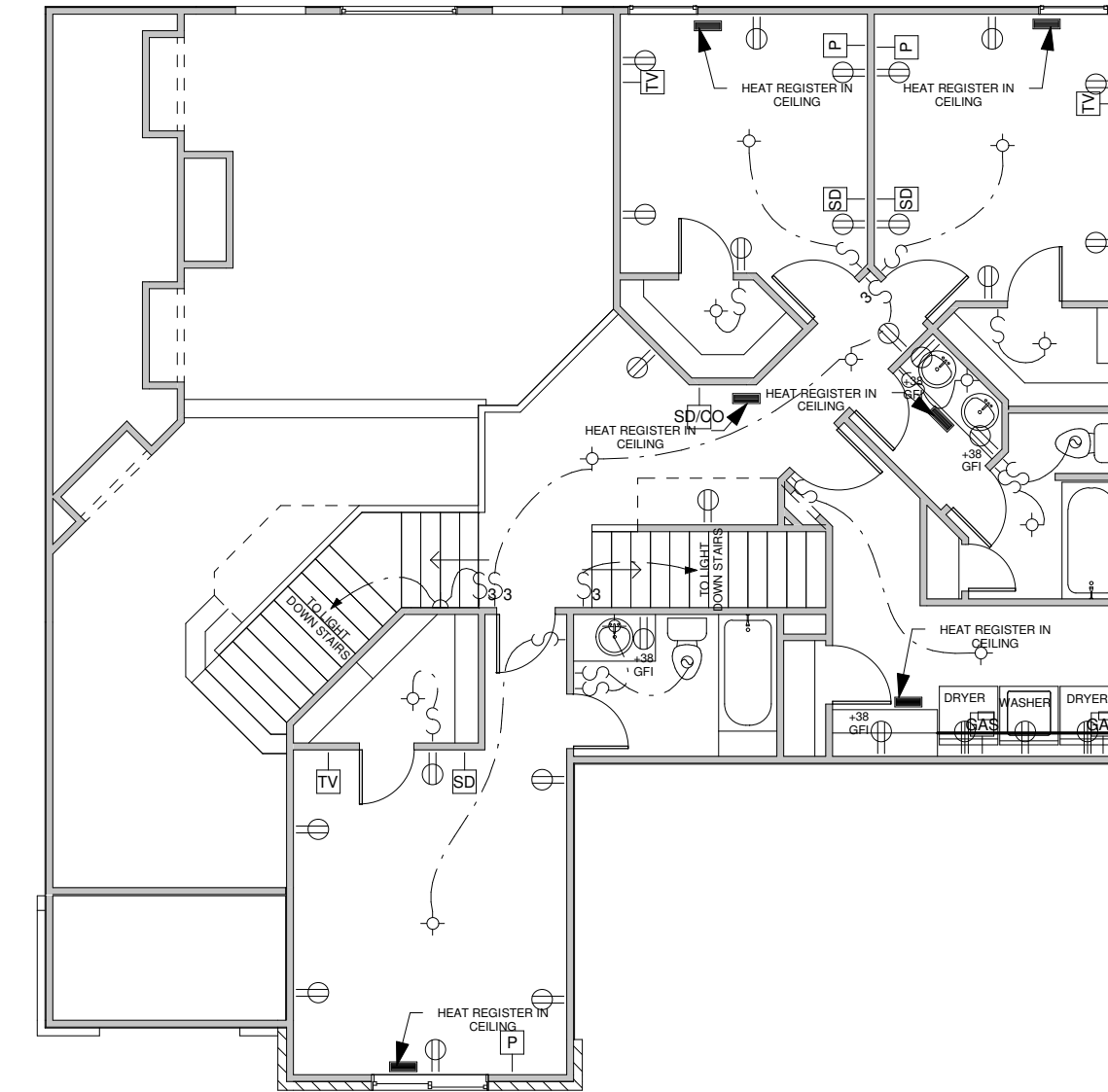
www.walkerhomedesign.com

## KEYNOTES



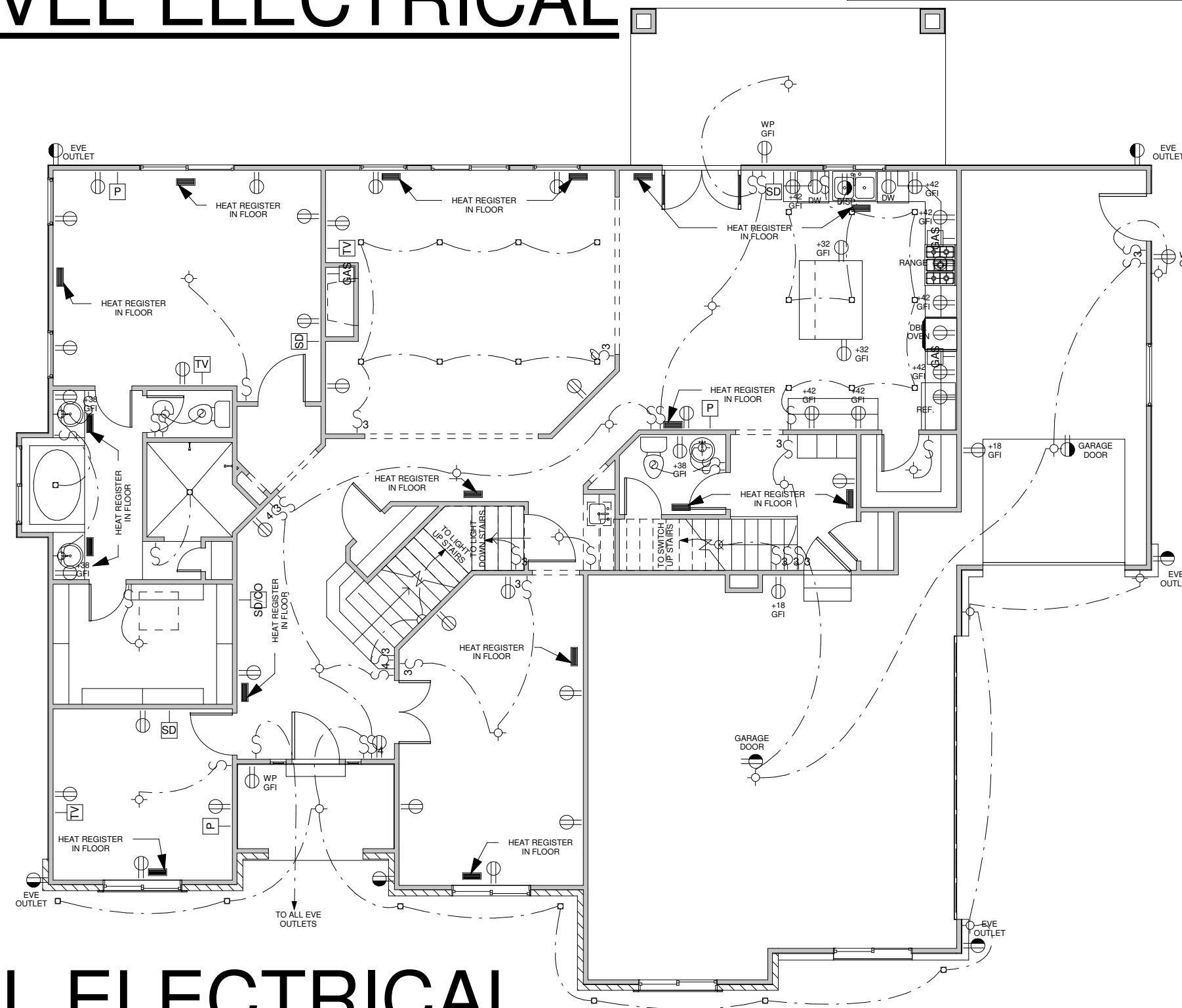
## ELECTRICAL NOTES

- A. PERMANENTLY WIRED SMOKE DETECTORS ARE REQUIRED AND MUST BE INSTALLED IN EACH SLEEPING ROOM AND AT A POINT CENTRALLY LOCATED IN THE CORRIDOR OR AREA GIVING ACCESS TO EACH SEPARATE SLEEPING AREA. WHEN THE DWELLING UNIT HAS MORE THAN ONE STORY AND IN DWELLINGS WITH BASEMENTS, A DETECTOR SHALL BE INSTALLED ON EACH STORY AND IN BASEMENT. IN DWELLING UNITS WHERE A STORY OR BASEMENT IS SPLIT INTO TWO OR MORE LEVELS, THE DETECTOR SHALL BE INSTALLED ON THE UPPER LEVEL, EXCEPT THAT WHEN THE LOWER LEVEL CONTAINS A SLEEPING AREA, A DETECTOR SHALL BE INSTALLED ON EACH LEVEL. WHEN SLEEPING ROOMS ARE ON AN UPPER LEVEL, THE DETECTOR SHALL BE PLACED AT THE CEILING OF THE UPPER LEVEL IN CLOSE PROXIMITY TO THE STAIRWAY. IN DWELLING UNITS WHERE THE CEILING HEIGHT OF A ROOM OPEN TO THE HALLWAY SERVING THE BEDROOMS EXCEEDS THAT OF THE HALLWAY BY 24" OR MORE, SMOKE DETECTORS SHALL BE INSTALLED IN THE HALLWAY AND IN THE ADJACENT ROOM. DETECTORS SHALL SOUND AN ALARM AUDIBLE IN ALL SLEEPING AREAS OF THE DWELLING UNIT IN WHICH THEY ARE LOCATED. DETECTORS MUST HAVE BATTERY BACKUP AND MUST EMIT A SIGNAL WHEN THE BATTERIES ARE LOW. DETECTORS MUST BE WIRED IN SERIES.
- B. BATHROOM AND UTILITY ROOM FANS SHALL BE CAPABLE OF FIVE AIR CHANGES PER HOUR.
- C. INCANDESCENT CLOSET LIGHTING SHALL BE 18" MINIMUM FROM COMBUSTIBLES MEASURED HORIZONTALLY. 6" HORIZONTAL IS PERMITTED FOR FLUSH FIXTURES AND FLUORESCENT FIXTURES.
- D. GROUND FAULT CIRCUIT PROTECTION REQUIRED FOR ALL 110 VOLT SINGLE PHASE 15 AND 20 AMPERE RECEPTACLES INSTALLED IN BATHROOM, GARAGES, AND OUTDOORS WHERE THERE IS DIRECT GRADE-LEVEL ACCESS TO DWELLINGS AND POWER POLES. GFCI ALSO REQUIRED WITHIN 6'-0" OF KITCHEN SINK FOR COUNTER RECEPTACLES. GARAGE OUTLETS MUST BE A MINIMUM OF 18" ABOVE FLOOR.
- E. GAS VENTS AND NONCOMBUSTIBLE PIPING IN WALLS PASSING THROUGH THREE FLOORS OR LESS SHALL BE EFFECTIVELY DRAFT-STOPPED AT EACH FLOOR OR CEILING.
- F. ALL INCANDESCENT LIGHTING FIXTURES RECESSED INTO INSULATED AREAS SHALL BE APPROVED FOR ZERO CLEARANCE INSULATION COVER (I.C.) PER THE 1992 MANDATORY ENERGY REQUIREMENTS.
- G. CONDUIT FOR METER BASE SERVICE ENTRANCE SHALL BE ANCHORED TO FOUNDATION WITH UN-STRUT AND CONDUIT CLAMPS (POWER ACTUATED FASTENERS ARE NOT ACCEPTABLE).
- H. PLASTIC ELECTRICAL BOXES IN GARAGE FIRE WALLS SHALL BE A MINIMUM 2 HOUR LISTING.
- I. ALL LIGHTS, SMOKE DETECTORS, BEDROOM OUTLETS & SWITCHES SHALL BE ARC FAULT PROTECTED AND OUTDOOR RECEPTACLES TO HAVE BUBBLE COVER.
- J. PERMANENTLY WIRED CARBON MONOXIDE DETECTORS ARE REQUIRED ON EACH FLOOR WIRED IN SERIES WITH SMOKE DETECTORS AND BATTERY BACK UP (PER CITY)



# LOWER LEVEL ELECTRICAL

Scale: 1/8" = 1'-0"



## LEGEND

- 110 DUPLEX OUTLET
- 110 SWITCHED OUTLET
- 110 4-PLEX OUTLET
- 220 OUTLET
- LIGHT FIXTURE
- RECESSED LIGHT
- SWITCH
- DIMMER SWITCH
- PHONE JACK
- TV OUTLET
- SMOKE ALARM
- EXHAUST FAN W/ 50 CFM VENTILATION
- FLOOR OUTLET
- GAS OUTLET
- DOOR BELL
- THERMOSTAT
- CARBON MONOXIDE DET.
- INTERNET CONNECTION
- SOUND SYSTEM SPEAKER
- WALL SCONCE

Copyright © Walker Home Design INC.  
All rights reserved. The use of these plans is expressly limited to Walker Home Design INC. and those who have purchased plans with a letter of usage. Reproduction, re-use, or publication by any method, in whole or in part, is prohibited.

## BRECKENRIDGE

Designed for  
**WRIGHT  
CUSTOM  
HOMES**

Plan # 3126  
Date FEB. 2006  
Drawn by WHD

PRINTED: 3/16/2006 5:32:55 PM  
Sheet 12 of 22  
OPT. STORAGE: 569  
FRUIT ROOM: 49  
UPPER LEVEL: 1,020  
LOWER LEVEL: 1,970  
MAIN LEVEL: 2,106  
TOTAL: 5,714

# MAIN LEVEL ELECTRICAL

Scale: 1/8" = 1'-0"

# ELECTRICAL PLANS